

TEXAS

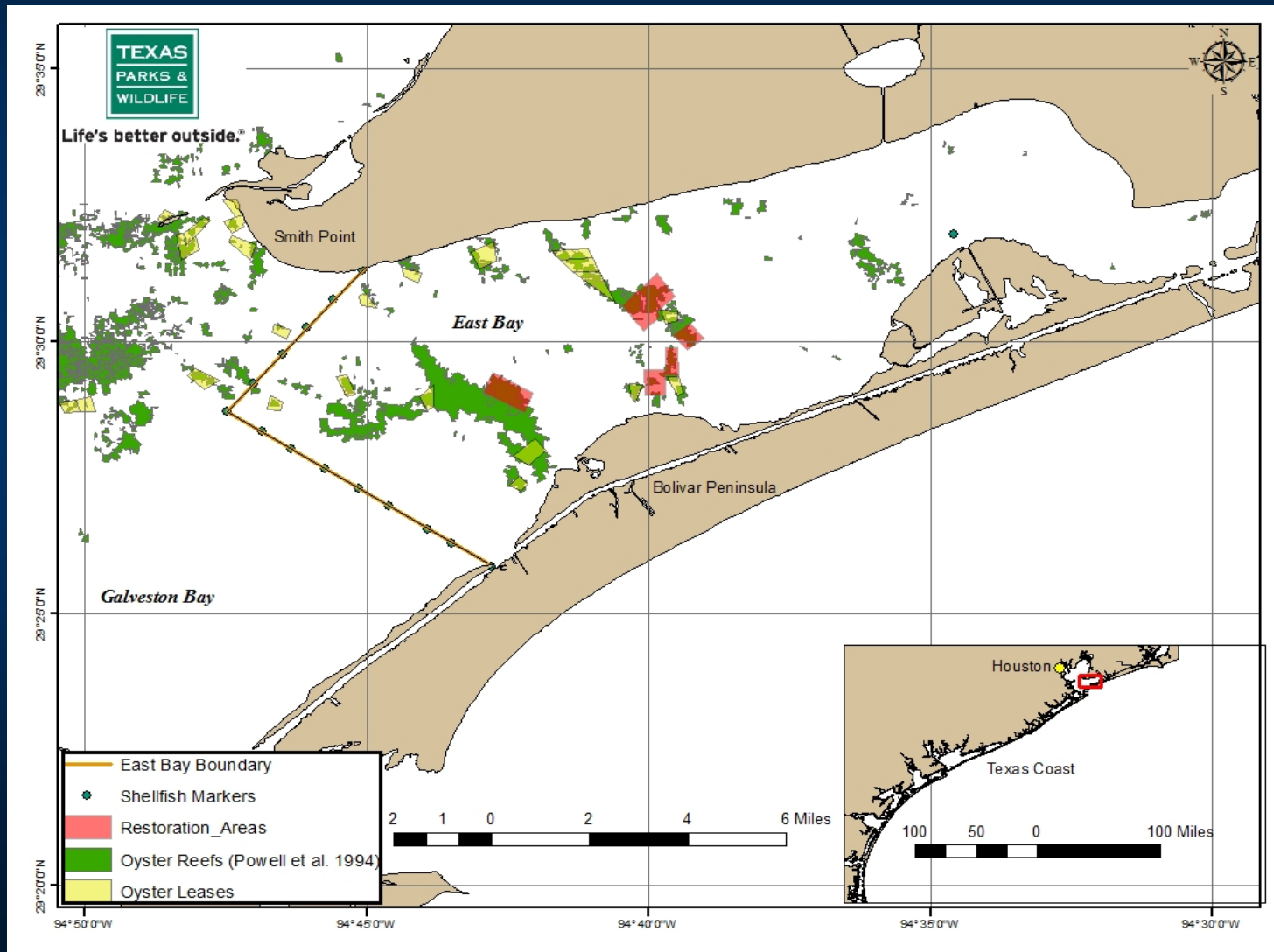
PARKS &

WILDLIFE

2014-2015 Coastal Fisheries Statewide Items

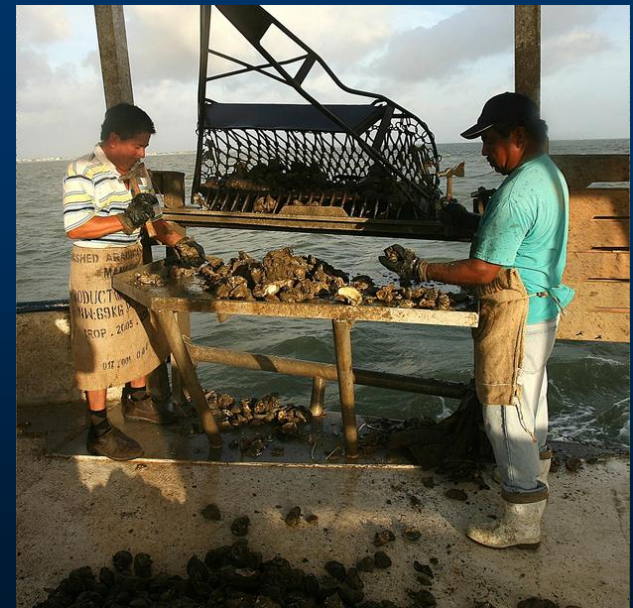
- Proposed
 - Temporary closure of public oyster reefs in East Galveston Bay and Half Moon Reef in Matagorda Bay
- Discussion
 - Expansion of Nov. southern flounder regulations
 - Expansion of 5-fish bag limit for spotted seatrout

Proposed East Galveston Bay Closure Area

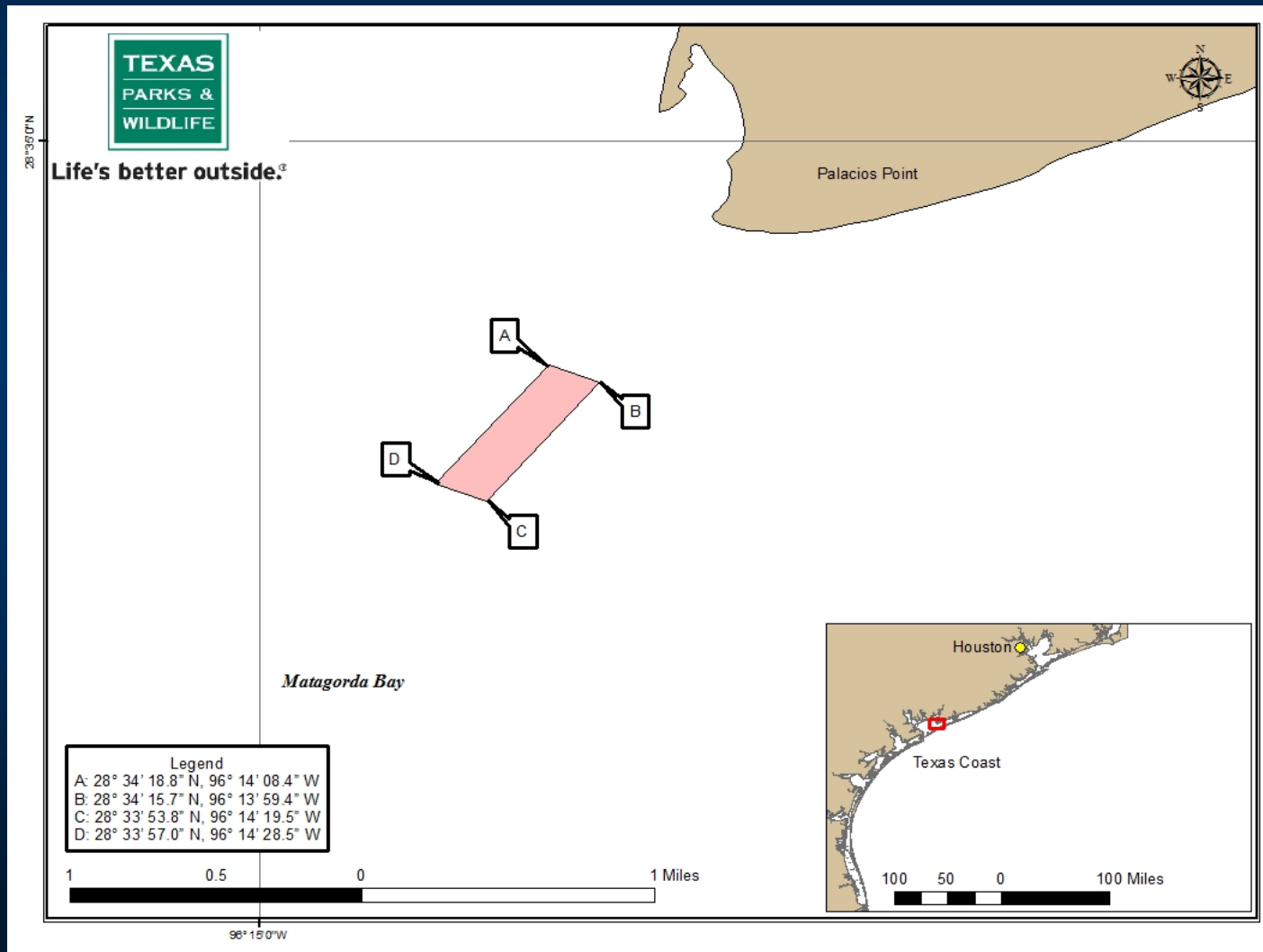


Half-Moon Reef Restoration

- Historical oyster reef but no documented production in recent years
 - Loss of cultch to storm impacts
 - Re-routing of ICWW
- Restoration effort to be conducted by The Nature Conservancy



Proposed Half-Moon Reef Closure Area



Public Comment

- Two scoping meetings
 - Port Lavaca (63 attendees)
 - 7 supported proposal as is
 - 15 support closing all of Galveston Bay
 - Dickinson (32 attendees)
 - Near unanimous support for closing only restoration areas

Public Comment

- 631 online comments
 - 546 support
 - 85 oppose
- Two emails
 - 1 in support of closing only restoration areas
 - 1 in support of East Bay proposal
- Unanimously endorsed by CRAC

Southern Flounder



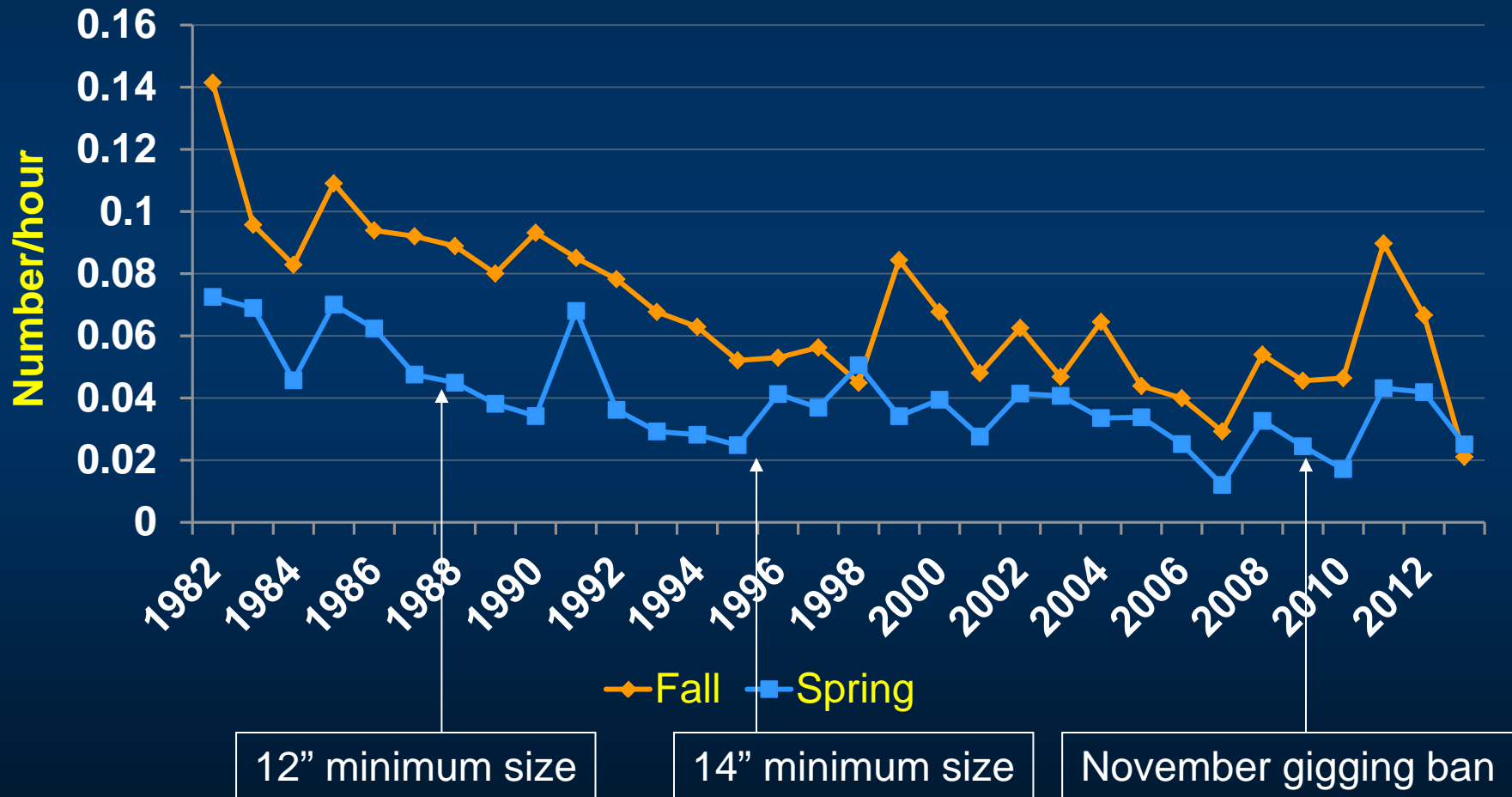
Current Flounder Regulations

- As of Sept 1, 2009:
 - Recreational possession limit reduced to 5, except in November when it is 2
 - Commercial possession limit reduced to 30, except in November when it is 2
 - No gigging allowed in November

Benefits from 2009 Regulations

- Commercial landings reduced 30% in first year
- Recreational landings reduced 32% in first year
- November market glut eliminated
- Reduces opportunity for sport gig fishery to illegally sell their catch
- Flounder population increased 180% in 3 years

Coastwide Gill Nets Southern Flounder



Flounder Management Options

- Depending on the arrival of the first cold fronts, the flounder run may occur earlier or later than the month of November
 - Extend the November regulations for additional conservation of spawning flounder
 - Include a sunset provision
 - No action – maintain status quo

Predicted Effects of Options

Closure	Effect on Landings	Effect on Spawning Biomass
Last week of October	-1.5%	+2.9%
Last 2 weeks of October	-3%	+6.0%
First week of December	-3.5%	+7.0%
Last week of October and first week of December	-5%	+10%
First 2 weeks of December	-7%	+14.1%
Last 2 weeks of October and first 2 weeks of December	-10%	+20.4%
December	-14%	+29.0%

Public Comment

- Seven scoping meetings
 - 37 in support, 166 opposed
- Electronic comments
 - 737 in support, 690 opposed
- CRAC unanimously endorsed additional measures for flounder
- CBGA supports status quo but will support TPWD decision

Angler Survey

- 52% supported status quo
- Next favorable options
 - First week of December (47%)
 - First two weeks of December (42%)
 - Last week of October (30%)
 - Last two weeks of October (27%)
 - Month of December (27%)

Flounder Management Options

- Status quo
- Extension of November regulations to:
 - Last week of October
 - Last two weeks of October
 - First week of December
 - First two weeks of December
 - Entire month of December

Spotted Seatrout



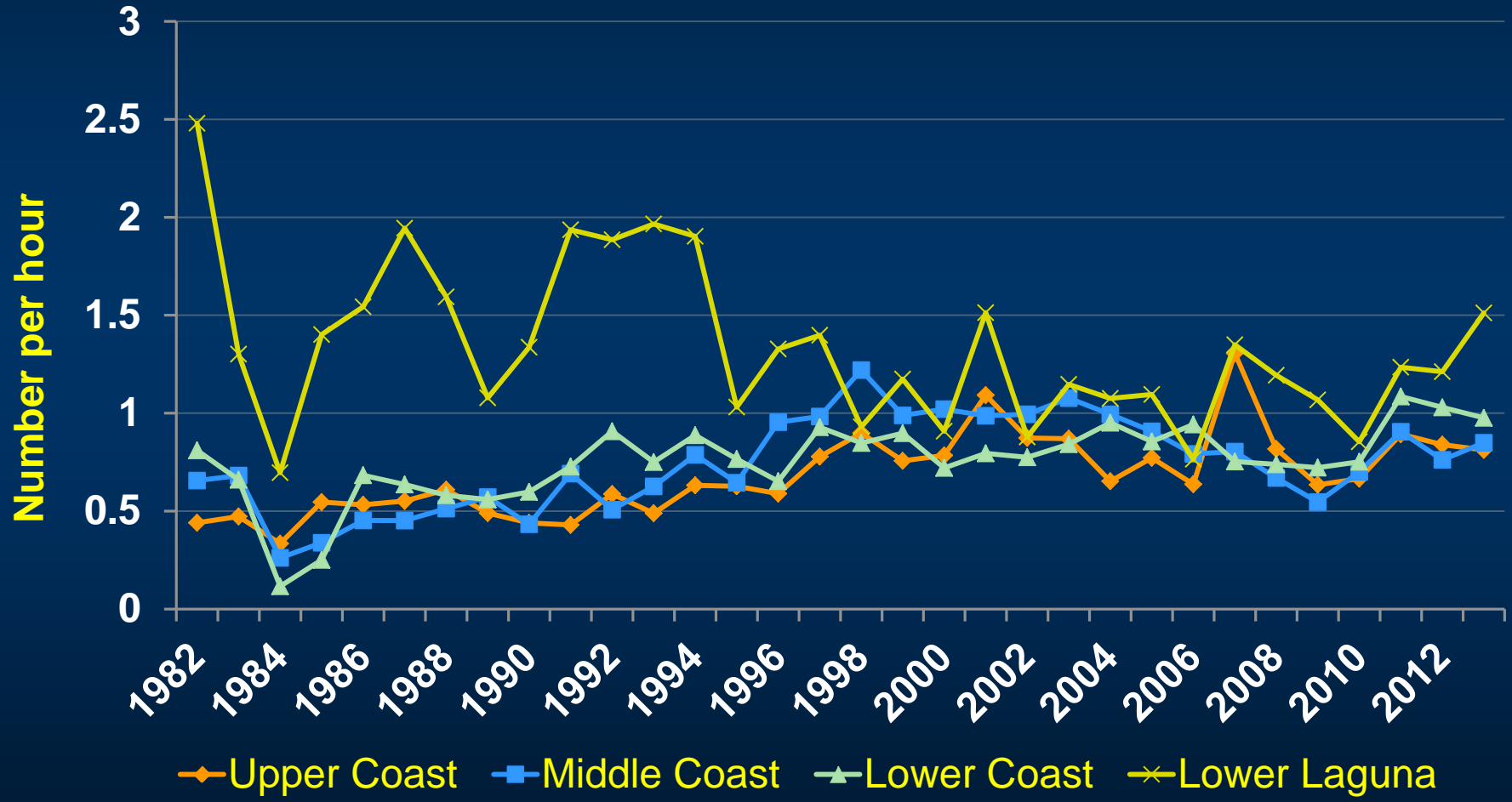
Current Regulations

- 10 fish daily bag
- 15" minimum size
- One over 25" per person per day, counts as part of daily bag
- Special regulation for the LLM (2007)
 - Reduced bag limit to 5 fish
 - Possession limit equals bag limit

Effect of the 5-Fish Bag Limit in the Lower Laguna Madre

- Landings have been reduced
 - Party boats by 12%
 - Private boats by 5%
- More, larger trout in the population
- Reports of high grading, or culling of fish
- Non-compliance

Spring Gill Nets by Region



Predicted Effects of Options

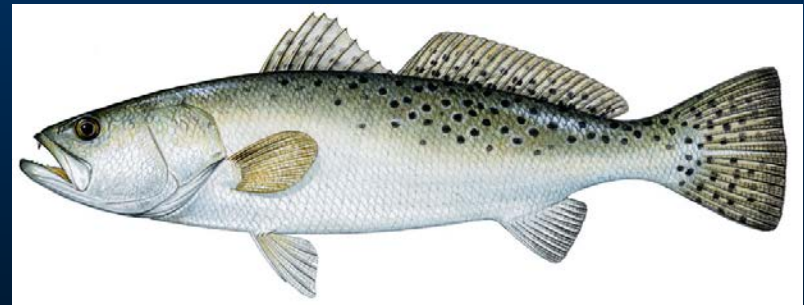
Option	Population	Spawning Biomass	Change of fish ≥ 25 "	Population of fish ≥ 25 "	Landings
Coastwide	+4.8%	+16.6%	+42.5%	0.7%	-13.8%
ULM to Matagorda	+4.5%	+16.4%	+41.8%	0.7%	-13.6%

Public Comment

- Seven scoping meetings
 - 42 in support, 157 opposed
- Electronic comments
 - 882 in support, 693 opposed
- CRAC unanimously endorsed a 5-fish bag limit with a 5-year sunset date
- CBGA supports status quo but will support TPWD decision

Angler Survey

- 55% supported status quo
- Next favorable options
 - 5-fish coastwide (49%)
 - 5-fish through Matagorda Bay (35%)



SST Management Options

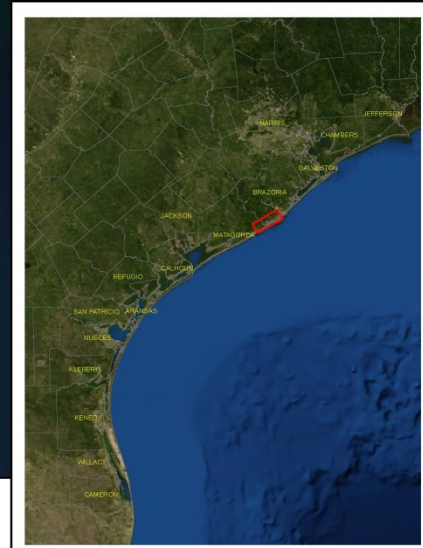
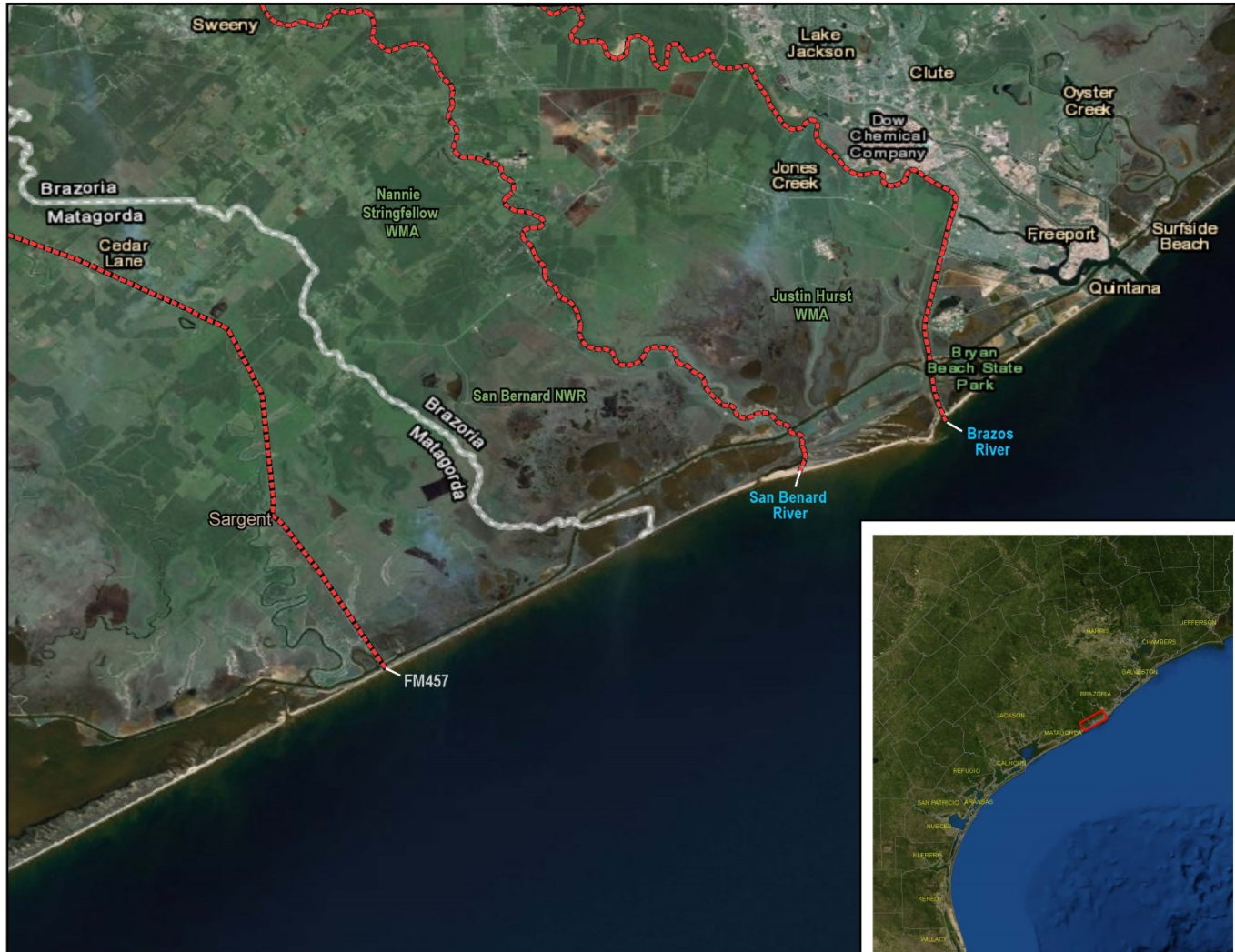
- Extend the 5-fish bag and possession limit along the entire Texas coast
- Extend the 5-fish bag and possession limit along the coast from the upper Laguna Madre to a designated boundary
- Include a sunset provision
- No action – maintain status quo

TEXAS

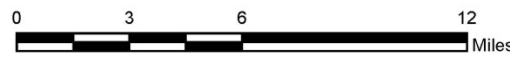
PARKS &

WILDLIFE

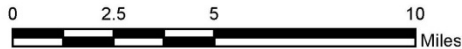
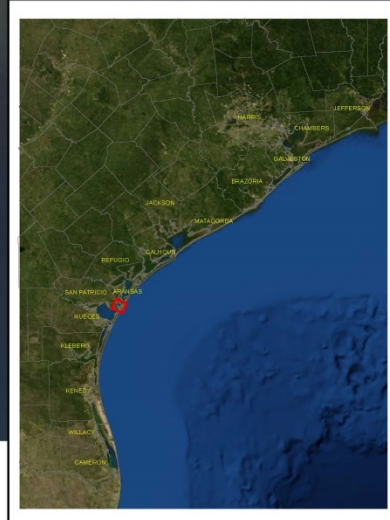
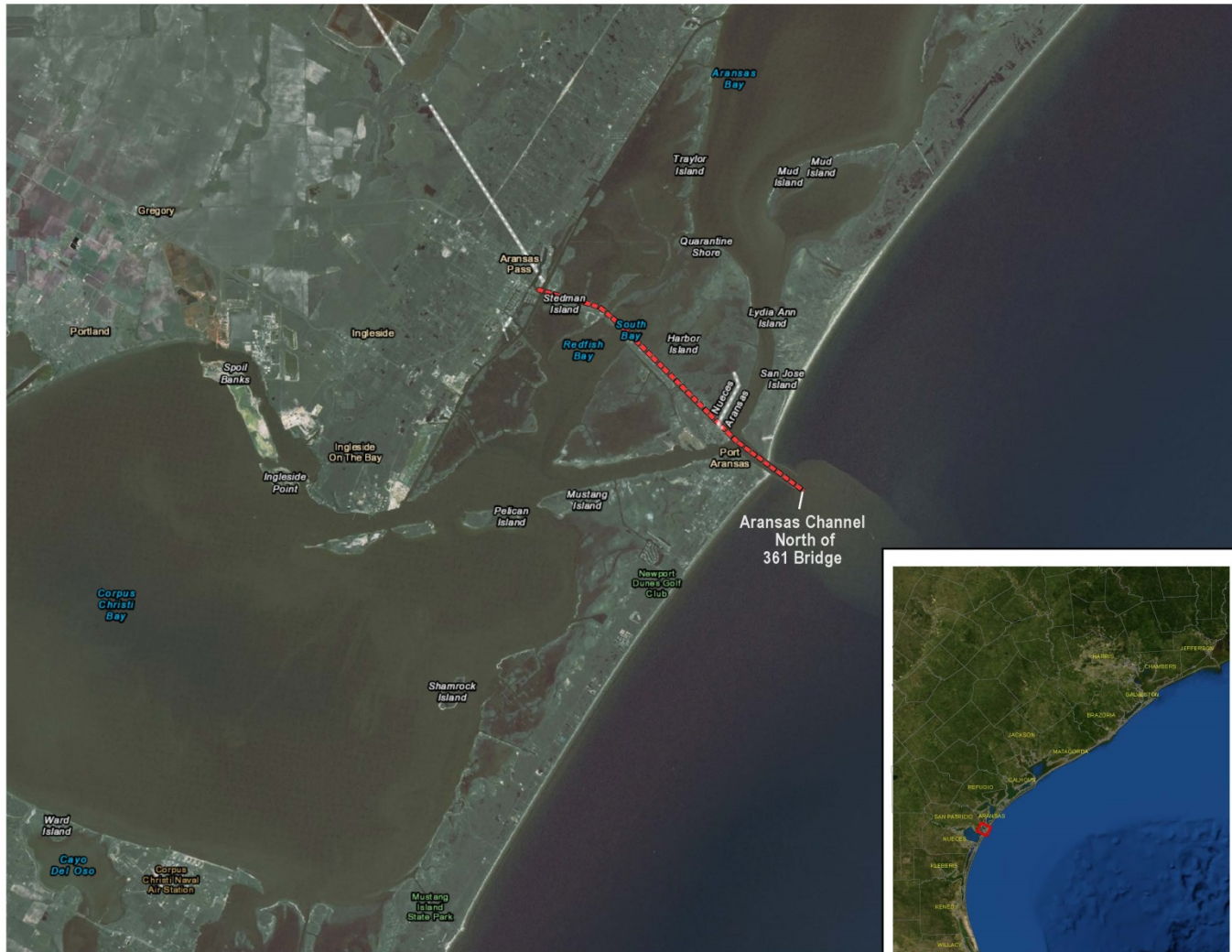
Trout Boundary Options



TEXAS
PARKS &
WILDLIFE



Trout Boundary Options



TEXAS

PARKS &

WILDLIFE